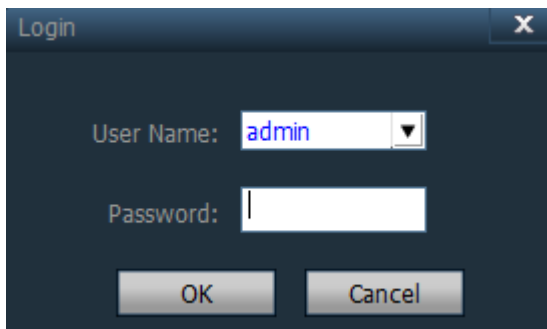


The HiP2P Client is the software which install in the Windows PC to configure our camera. You can get this software in the CD or download it from our official website. After installation, it will show below icon on the desktop.



### 1. Login Instruction

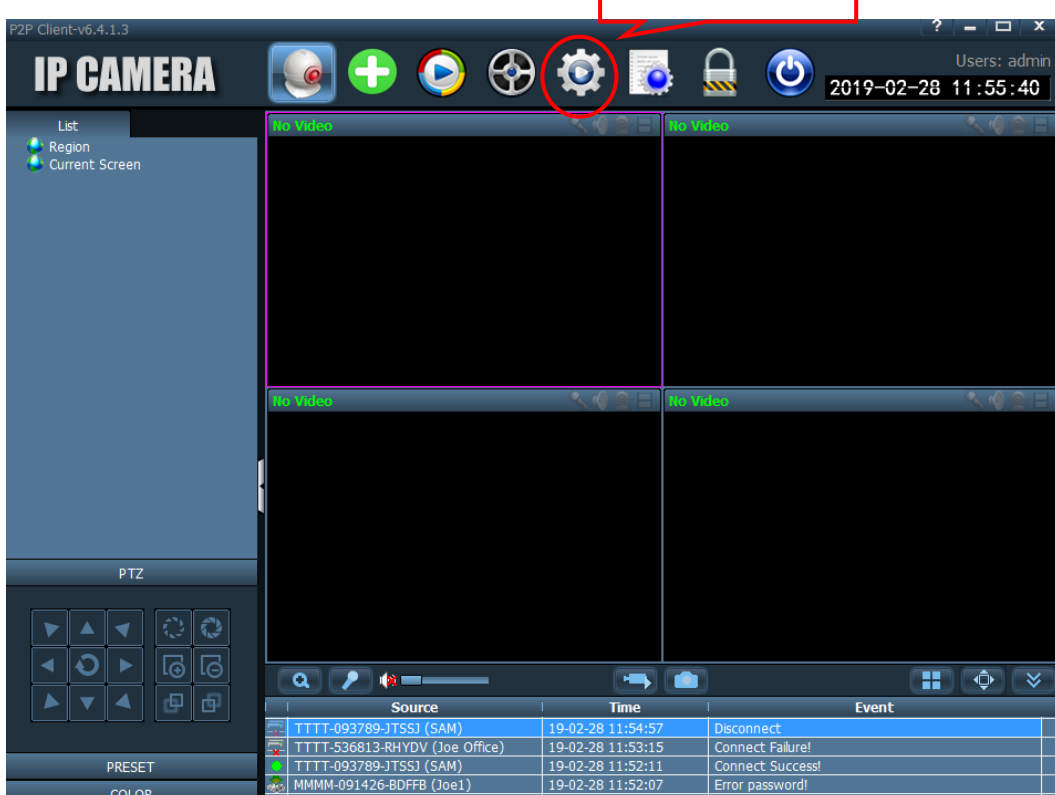


The default User Name is "admin" and Password is "blank" .

Just click Ok and then you login the software.

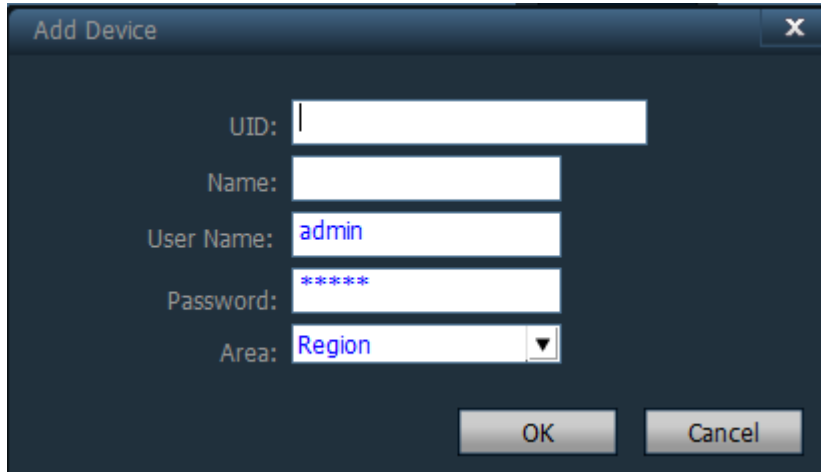
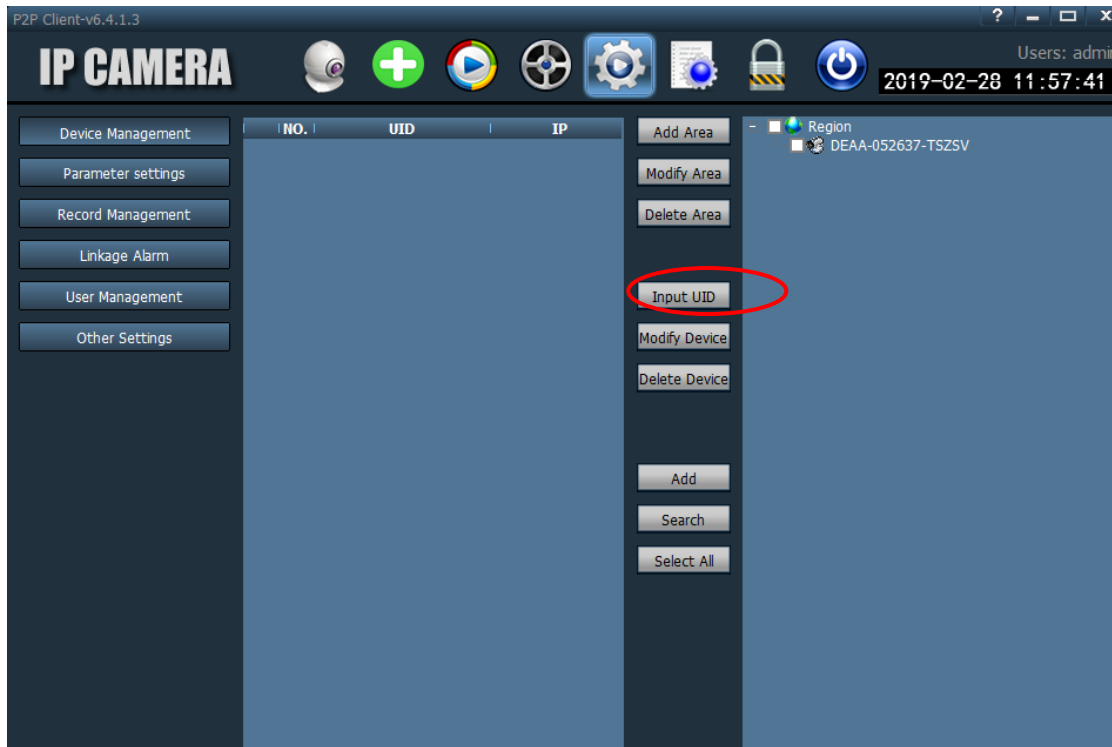
### 2. Add device

Click "Config"

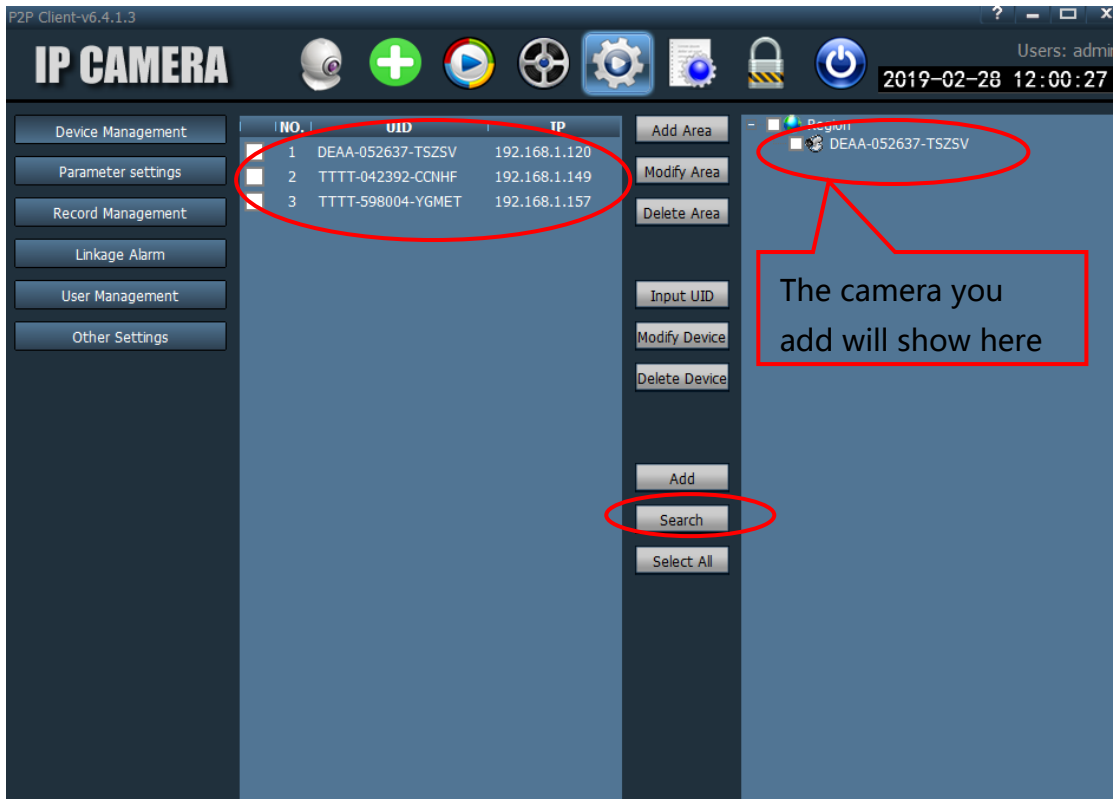


Source	Time	Event
TTTT-093789-JTSSJ (SAM)	19-02-28 11:54:57	Disconnect
TTTT-536813-RHYDV (Joe Office)	19-02-28 11:53:15	Connect Failure!
TTTT-093789-JTSSJ (SAM)	19-02-28 11:52:11	Connect Success!
MMMM-091426-8DFFB (Joe1)	19-02-28 11:52:07	Error password!

**3. You can Input the camera UID manually to add the camera if you know about it.**

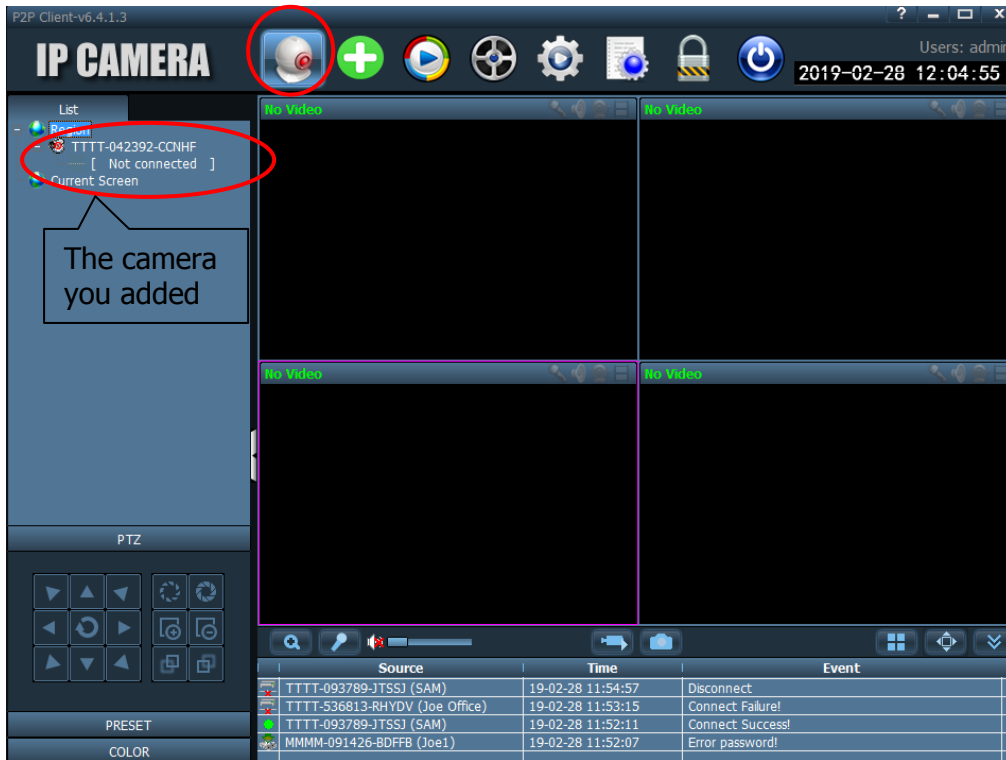


**4. If the camera and the PC you use is in the same LAN, you can Search it and add it.**



**5. To see the camera video**

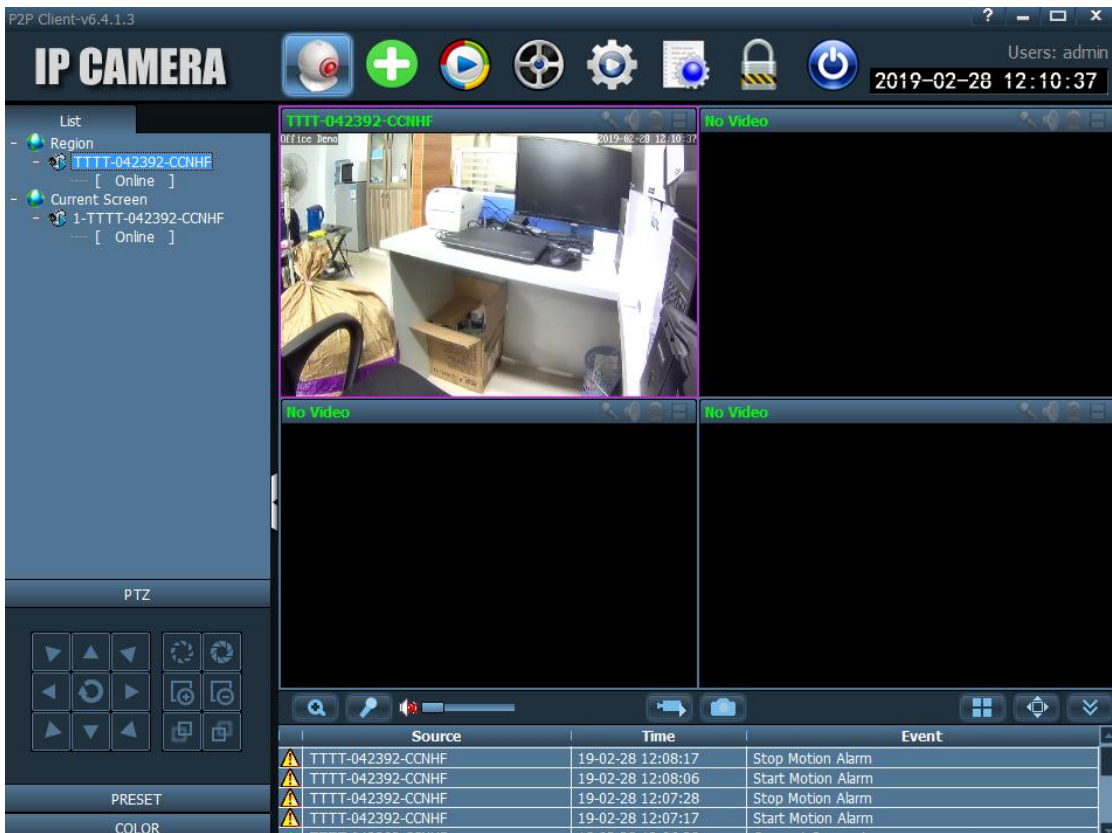
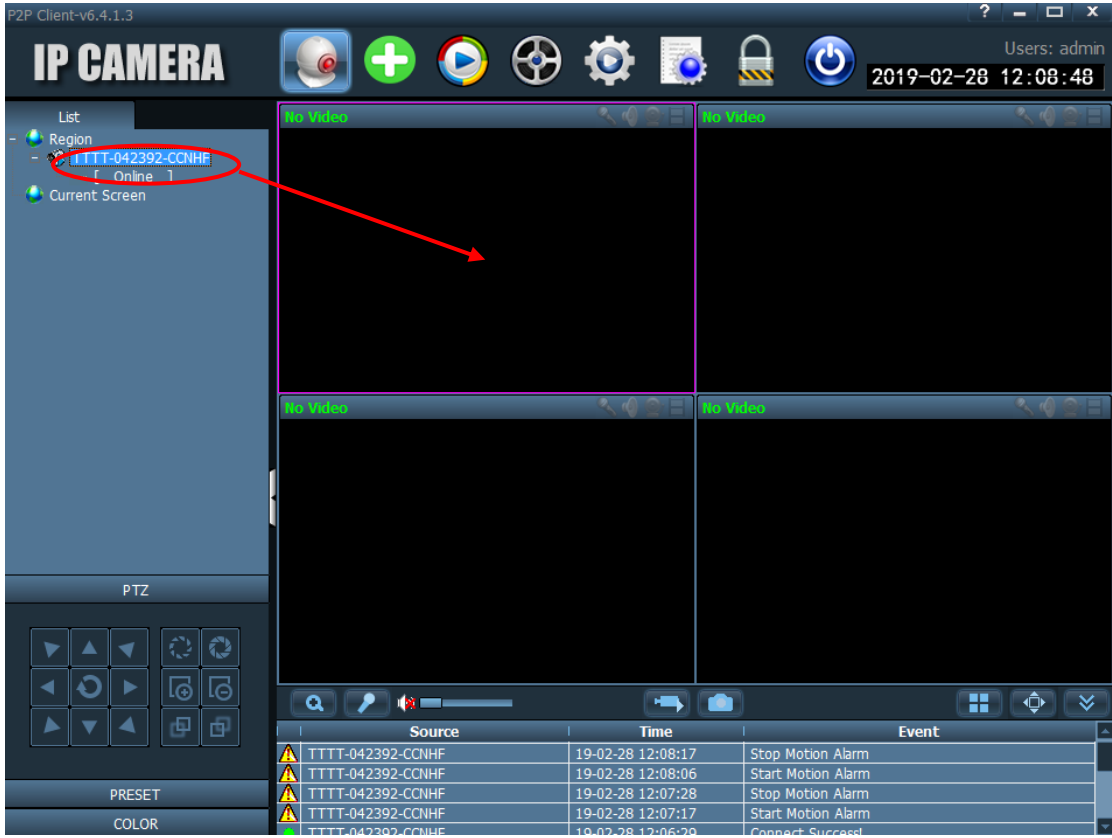
After add the camera, go back to the Preview



Right Click the camera UID, Connected Device and you can select the video Quality here.

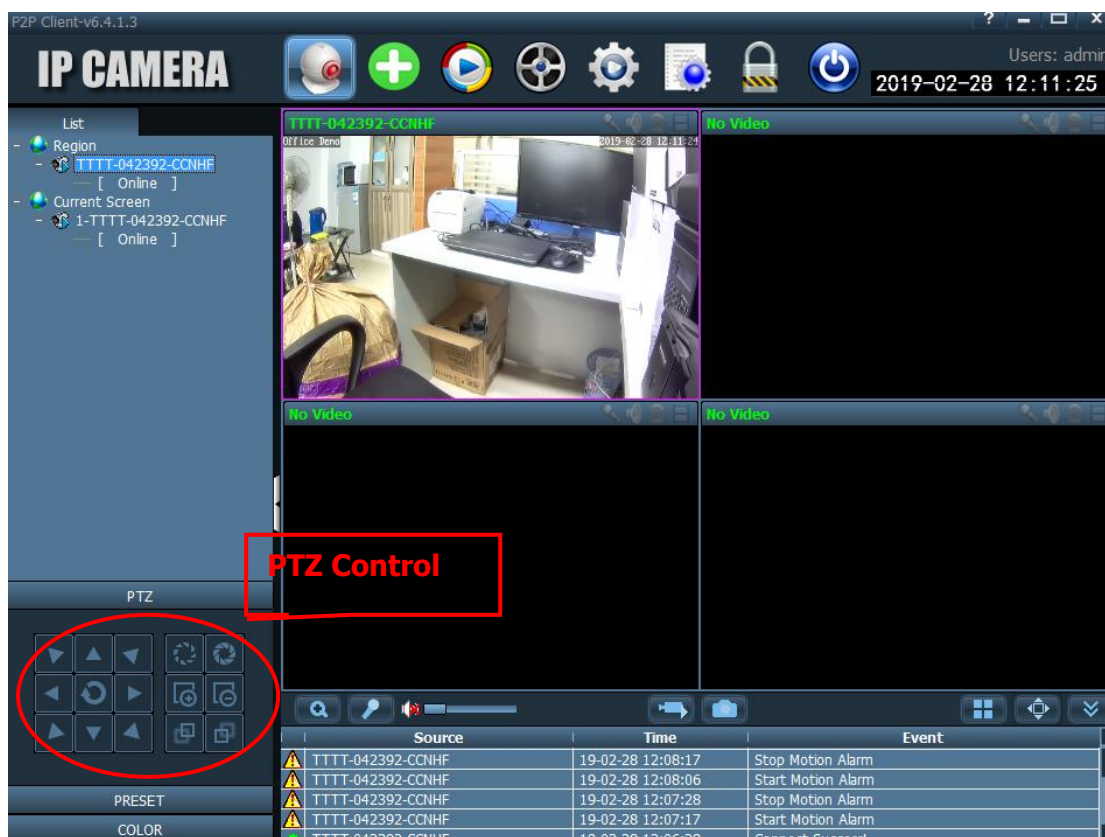


If the camera is Online, Left Click the Camera UID and drag it to any video window, it will display the camera video .



## 6. PTZ Control

You can control the camera PTZ function here



If you still need further help, kindly contact us in [support@zilink.cn](mailto:support@zilink.cn)